



VAC·CON
MORE POWER TO YOU

COMPRESSED NATURAL GAS OPTION
COMBINATION SEWER CLEANER




Vac-Con is prepared to meet the demands of changing environmental regulations.

In addition to its significant and industry-leading line of diesel fuel-powered vacuum equipment, Vac-Con offers alternative-fueled equipment to be responsive to specific local air-quality standards.

Vac-Con will provide the latest technology in CNG fuel systems with chassis and engines to meet Vac-Con's high standards for machine performance to provide you with an environmentally responsive combination machine that gets the job done effectively!

This is just another way that Vac-Con provides 'MORE (CLEAN) POWER TO YOU!'

Configurations include single and two-engine designs. Two-engine designs are available in CNG power for both engines or with chassis CNG and auxiliary diesel power meeting the latest emission standards for industrial engines.

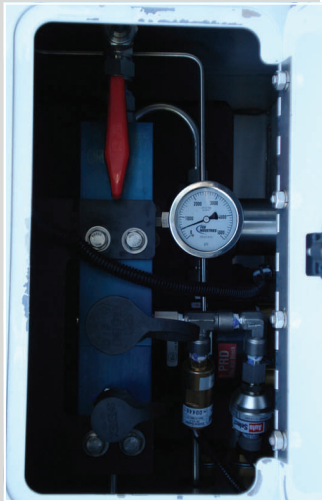
 Facebook—Keyword: Vac-Con

www.Vac-Con.com



Twitter/VacConInc

CNG POWERED COMBINATION SEWER CLEANER



REFUELING
STATION



CNG FUEL STORAGE
ENCLOSURE

TYPICAL CNG CONFIGURATION

CNG Fuel System Description:

- Fabricated metal cabinet with a tool box incorporated into the CNG enclosure mounted behind the cab of the chassis. The fabricated structure is designed to meet all federal, State and local codes.
- The fuel tanks will be housed in a fabricated enclosure with access doors for each tank on both ends and one access door on the driver's side for the tool box. Four (4) 16.3" x 85.8 SCI cylinders (estimated 15.5 DGE each) will be used for the DNG fuel storage to give Vac-Con the estimated equivalent of 62.2 (DGE) diesel gallons of fuel storage.
- All plumbing will be 316L stainless steel.
- All tube fittings will be Swagelok™ stainless steel double ferruled™ compression fittings.
- Each tank will be equipped with a GFI manual shut-off valve.
- A Nupro® Check valve will be used on the inlet of each tank valve.
- A Parker® solenoid valve will be used on the outlet of each cylinder valve.
- Each cylinder will be equipped with two PRD's (thermal relief device) as required by law and the cylinder manufacturer.

CNG Fuel System Refueling Module:

- A stainless steel fuel panel.
- Stainless steel Swagelok™ tube fittings.
- A Parker® high pressure natural gas fuel filter.
- One ITT high pressure reducing regulator
- A Parker® fill manifold with shut-off valve.
- Slow and Fast Fill receptacle (located on the street or curb side of the truck, or both)
- Stainless steel pressure gauge rated at 5000 psi.
- A low pressure sensor.